



LEE & PLUMPTON

*Inspiration At Work*

# SIT/STAND DESKING



# INMOTION





# Features & Details

- Robust design provides stable, user adjustable, variable height workstation.
- Facilitates well-being benefits of changing posture and workstyle.
- Electric or Manual versions.
- Single or back-to-back.
- 25mm worksurfaces.



## SPECIFICATION

- 25mm E1 melamine faced high density particle board.
- Weight load capacity (per desk) 80kg.
- Single or back-to-back available.
- Two tier column leg with flat base for aesthetics & flexibility.
- Cable management available.
- Desk mounted screens available.

## CABLE PORTS

- All desks are fitted with cables ports to match the leg. White cable ports with white legs, grey cable ports with silver legs.

## ELECTRIC

- 631-1281mm vertical movement range.
- 35mm per second motor lifting speed.
- Desk retracts if it comes in to contact with a solid object.
- Conforms to BSI regulations BS-EN527-1 2011.
- Convenience of a four setting control panel available (with memory function).
- 5 year guarantee on uprights, motor and controller.
- 7 year guarantee on all other components.

## MANUAL

- 686-1186mm vertical movement range.
- Front mounted crank handle retracts under work surface when not in use.
- 5 year guarantee on uprights, and mechanism.
- 7 year guarantee on all other components.



## QUICK SHIP

### Not available

Wood finishes are heat, stain and scratch resistant when used for their intended purposes.

Please add the metal and wood suffix to your code when ordering eg: IMRE12D1EWBE

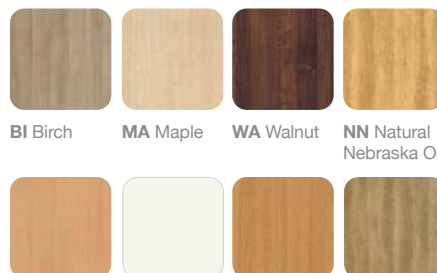
## GROUP A

### Metal Finishes



S Silver W White

### Wood Finishes



BI Birch MA Maple WA Walnut NN Natural Nebraska Oak  
BE Beech WH White LO Light Oak GN Grey Nebraska Oak

**QS:** Quick Ship | **GROUP A:** Subject to a longer lead time.

● Available  
○ Not Available



## ELECTRIC INMOTION

### SINGLE DESK



W x D x H (mm)	Code	QS	Grp A
1200 x 795 x 631 to 1281	IMRE12D1E	○	●
1400 x 795 x 631 to 1281	IMRE14D1E	○	●
1600 x 795 x 631 to 1281	IMRE16D1E	○	●
1800 x 795 x 631 to 1281	IMRE18D1E	○	●

### BACK TO BACK DESK



W x D x H (mm)	Code	QS	Grp A
1200 x 1680 x 631 to 1281	IMRE12B2E	○	●
1400 x 1680 x 631 to 1281	IMRE14B2E	○	●
1600 x 1680 x 631 to 1281	IMRE16B2E	○	●
1800 x 1680 x 631 to 1281	IMRE18B2E	○	●

### CONTROL PANEL



Code		QS	Grp A
SIMCP	Four setting memory control panel	○	●

## MANUAL INMOTION

### SINGLE DESK



W x D x H (mm)	Code	QS	Grp A
1200 x 795 x 686 to 1186	IMRE12D1M	○	●
1400 x 795 x 686 to 1186	IMRE14D1M	○	●
1600 x 795 x 686 to 1186	IMRE16D1M	○	●
1800 x 795 x 686 to 1186	IMRE18D1M	○	●

### BACK TO BACK DESK



W x D x H (mm)	Code	QS	Grp A
1200 x 1680 x 686 to 1186	IMRE12B2M	○	●
1400 x 1680 x 686 to 1186	IMRE14B2M	○	●
1600 x 1680 x 686 to 1186	IMRE16B2M	○	●
1800 x 1680 x 686 to 1186	IMRE18B2M	○	●

**QS:** Quick Ship | **GROUP A:** Subject to a longer lead time.

● Available  
○ Not Available

## ACTIVE PEDESTAL



2 Drawer

3 Drawer

Pedestal with Silver Handle	W x D x H (mm)	Code	QS	Grp A
2 Drawer	400 x 600 x 580	AVMP60D2	○	●
3 Drawer	400 x 600 x 580	AVMP60D3	○	●

Full details see pages 208-210. Cushion sold separately.

## ACTIVE CADDY



Caddy with Silver Handle	W x D x H (mm)	Code	QS	Grp A
With Doors	800 x 400 x 580	AVMC80SD	○	●
Without Doors	800 x 400 x 580	AVMC80ND	○	●

Full details see pages 208-210. Cushion sold separately.

## CUSHION



Pedestal Cushion

Caddy Cushion

Cushion	W x D x H (mm)	Code	Group 1	Group 2	Group 3	Group 4	Group 5+
Pedestal	400 x 600 x 30	AVMPCU60G					
Caddy	400 x 400 x 30	AVMCCU80G					

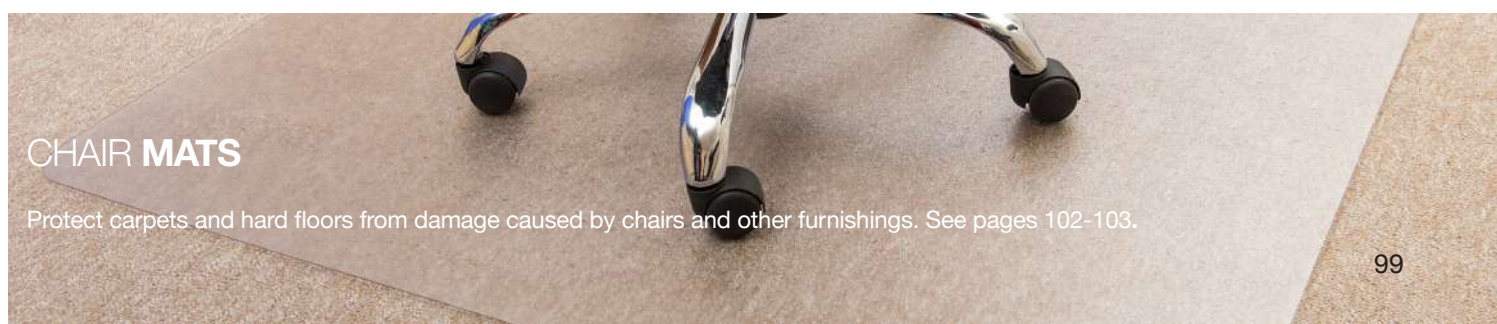
Full details see pages 208-210. For fabric options see page 254-259.

## ANTI-FATIGUE SYSTEM MATS

- Contains anti-microbial ingredients to protect from microbial deterioration and is effective for the life of the product.
- Anti-slip base with 'easy-slide' for repositioning.
- Environmentally friendly.
- Non-toxic and phthalate free.
- 10 year Guarantee.

For full details see page 133.

Designed to encourage regular foot movement and changes in standing position, to stimulate blood flow and increase metabolism.



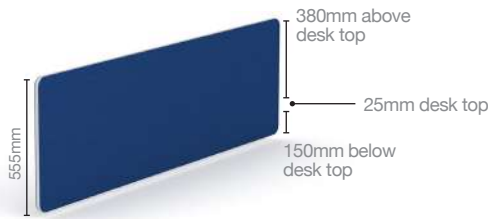
## CHAIR MATS

Protect carpets and hard floors from damage caused by chairs and other furnishings. See pages 102-103.

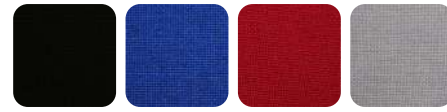
**QS:** Quick Ship | **GROUP A:** Subject to a longer lead time.

● Available  
○ Not Available

## INMOTION SCREENS



### Standard Fabrics



**BK** Black   **BL** Blue   **RB** Ruby   **GY** Grey

For colour fabric options refer to page 254-259.

The table below shows code for screens with white brackets. For silver brackets, replace the 'W' in the code with an 'S'. Screens are mounted with either white or silver brackets to match the desk frame finish.

For further information including performance and fire retardancy specifications please visit [www.camirafabrics.com/contract](http://www.camirafabrics.com/contract) or call our Customer Services Team.

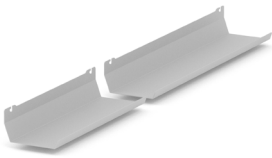


Screens are available in a range of fabric colours:

- Group 1 fabrics: Camira Cara or Carlow range.
- Group 2 fabrics: Camira Lucia range.
- Screens include a silver/grey edging strip (other colours available on request).

W x H (mm)	QS	Grp A	Std colours	Group 1 fabric	Group 2 fabric
1200 x 555	○	●	SCIM12W	SCIM12WG1	SCIM12WG2
1400 x 555	○	●	SCIM14W	SCIM14WG1	SCIM14WG2
1600 x 555	○	●	SCIM16W	SCIM16WG1	SCIM16WG2
1800 x 555	○	●	SCIM18W	SCIM18WG1	SCIM18WG2

## CABLE TRAYS



Cable trays are available in silver or white to match the frame finish.

Desk Width	Cable Trays	Code	QS	Grp A
1200mm	1 x 400mm and 1 x 600mm	IMCTRAY12	○	●
1400mm	2 x 600mm	IMCTRAY14	○	●
1600mm	2 x 400mm and 1 x 600mm	IMCTRAY16	○	●
1800mm	1 x 400mm and 2 x 600mm	IMCTRAY18	○	●

Cable trays are supplied in 400mm and 600mm parts depending on the length of your desk.

Please add the colour suffix to your code when ordering, **S** Silver or **W** White.





# A COMMITMENT TO SERVICE

## Dedicated Customer Service

The values of Integrity, Commitment, Development, Accountability and Teamwork underpin the culture and aspirations of the Company. We strive to design and develop an extensive portfolio of quality products which combine aesthetics and practicality to offer Best Value solutions. The ongoing monitoring of every aspect of the business ensures we are able to implement continuous improvements to maintain our determined commitment to customer service.



## Inhouse Delivery Fleet

We operate and manage our own delivery fleet and are targeted for accurate, on time order fulfillment. Rapid turnaround is guaranteed by our weekly scheduled deliveries and, on many items, we also offer a 'Quick Ship' service. Standard deliveries are free of charge with next day delivery on stocked items or customer collection (with 24 hours' notice) also available.

- Quick Ship: Products delivered within 5 working days from your order deadline date.
- Group A: Products subject to a longer lead time (typically 3 weeks).



## Extensive Stock Holding

Our 200,000 square feet manufacturing base includes an extensive warehousing facility. We hold stock of an estimated 50,000 items including raw materials and finished goods.

This substantial financial investment provides a further demonstration of our determined commitment to the highest levels of customer service.

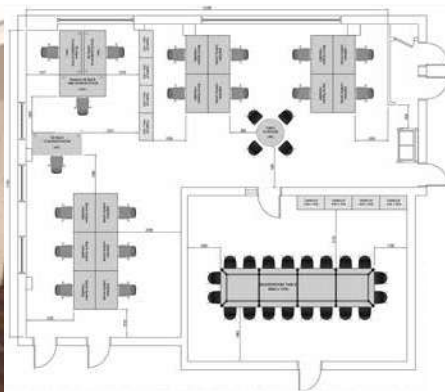


# INHOUSE EXPERTISE

## Bespoke Design

Unlike many manufacturers, we are able to develop customised solutions to match each client's precise requirements. With its own production unit and dedicated team, our Bespoke department can design and manufacture products from original 'sketches' or develop existing range items to customised specifications.

Your dedicated account manager, together with a member of the Bespoke team, will work with you to develop a solution to match your requirement and budget.



## Planning & Design

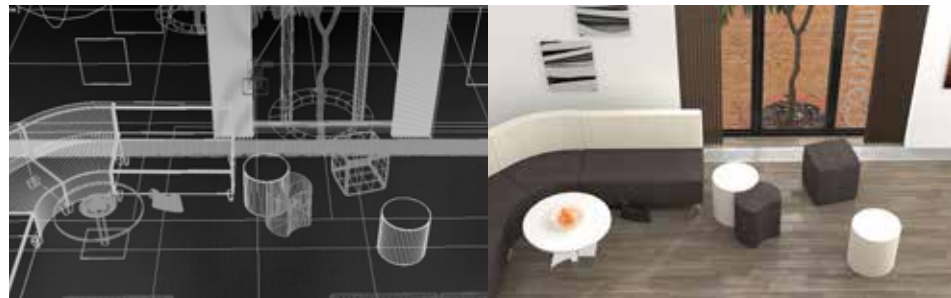
Our highly experienced designers are available to offer expert space planning and design services. Working from simple sketches or architect plans, we can recommend product choice, configurations and finishes to match desired outcomes and available budget.

We are able to advise regarding effective space utilisation and also work collaboratively to consider lighting, team requirements, storage as well as existing building services and future reconfigurations of any environments.

## CGI Expertise

We have an extensive library of product images together with a portfolio of 3D CAD files. Customers can download files from our web site or upon request.

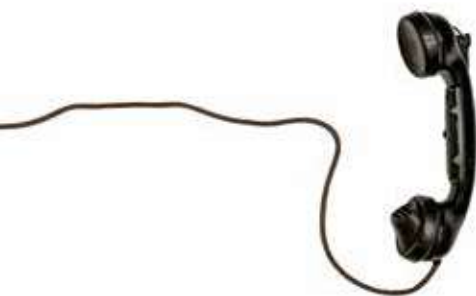
The wide choice of CGI, photo-realistic room scenes can help visualise proposed interiors, colours, and designs.



## Sales & Customer Support

We know relationships are important. Our nationwide sales team offers 'face to face' meetings to provide expert support, advice and guidance as well as facilitating access to our extensive inhouse services including customised marketing materials, product samples and collaborative events.

Each and every order is carefully monitored and tracked by our customer services team. Fully trained advisors provide a dedicated point of contact to manage queries and requests as well as full after-sales support.





# A COMMITMENT TO QUALITY

Continuous investment in facilities and training, coupled with a dedicated workforce and strong supplier relationships, ensures the quality, consistency and reliability our customers expect. The management and measurement of our internal processes and procedures drives our quest for development and improvement and, therefore, ongoing customer satisfaction.

We have an established reputation for the supply of robust, quality products. We design and manufacture to comply with relevant British and international standards – covering dimensions; ergonomics; strength & stability; moving parts; fire regulations; and electrical systems. The inherent strength and durability means that our products will withstand the rigours of daily ‘wear and tear’ thus extending the lifecycle. Our furniture includes a 7-year guarantee (unless specified).

Copies of our credentials and certifications are available at [leeandplumpton.co.uk](http://leeandplumpton.co.uk)



Quality Management System BS EN ISO 9001



Environmental Management System BS EN ISO 14001



Occupational Health And Safety Management System OHSAS 45001 (OH&S)



Commercial Interiors U.K. (CIUK)



Established 1987

Commercial Furniture Advisory Service (CFAS)



Members Of Furniture Industry Research Association (FIRA)



# RESPONSIBLE MANUFACTURING

As a major manufacturer, we recognise our responsibility to consider all areas of our business in terms of environmental impact. From management, administration and product design through to facilities management and logistics together with manufacturing processes and procedures, we strive to introduce positive changes to protect the planet.

Our efforts embrace the full spectrum of business activities including reductions in carbon emissions through to waste prevention, recycling initiatives, transportation, investment in solar power and procurement practices. Sustainability and circularity principles are embedded within our product design and development processes. We are committed to minimising our carbon impact and working towards a greener future.

## Environmental Management

We measure and assess our efforts through our integrated Environmental Management System. Registered to ISO 14001: 2015, our system incorporates clear objectives which are monitored and measured through a documented programme with regular reviews for continuous improvement.



## Chain of Custody

Our Chain of Custody certification (COC) with the Forest Stewardship Council® (FSC®) represents the unbroken path that certificated products take, from the sustainably managed forests of origin, to the consumer.



The mark of responsible forestry

## Sustainability

Created in 2006, the Furniture Industry Sustainability Programme (FISP) has become established as the furniture industry forum on all environmental and sustainability issues. These considerations relate to all aspects of the industry's business, from purchasing and procurement through to end of product life, including social, ethical and employment concerns as well as waste, energy and emissions.

We have achieved full membership of FISP and this enables us to focus on reducing our social and environmental impact. We have been proud members of the Furniture Industry Sustainability Programme (FISP) since 2007. Membership is subject to regular independent re-audits to monitor our continuing commitment.



## Energy Management

Our energy management strategy includes a number of practices to minimise usage throughout all areas of the business. In addition, in the last year our solar panels have generated over 160,000 Kwh of electricity. Nearly half of the output is returned to the National Grid – sufficient to power 26 three/quarter bedroom homes for a year.



## LEE & PLUMPTON

Bunns Bank | Attleborough Norfolk | NR17 1QD  
T: 01953 453830 | E: sales@leeandplumpton.co.uk

[leeandplumpton.co.uk](http://leeandplumpton.co.uk)



@LEEANDPLUMPTON

October 2022\_v1.1

E&OE October 2022

Images featured within this brochure are for illustrative purposes and appearances may vary from those shown. Due to our ongoing initiatives, Lee & Plumpton Ltd. reserve the right to change, modify or delete products at any time without notification.

