

# FINISHES

---

Office Furniture  
2019

## BOARD FINISHES



(AN)  
Anthracite

(N)  
Walnut

(DN)  
Dijon Walnut

**NEW FOR 2019** (NO)\*  
Nebraska Oak



(SC)  
Santiago Cherry

(CO)  
Calva Oak

(LO)  
Light Oak

(B)  
Beech



(SO)  
Stone Oak

(VO)  
Verade Oak

(CM)  
Canadian Maple

(J)  
Japanese Ash



(BL)  
Black

(S)\*  
Silver

(ST)  
Slate

(G)  
Grey



(W)  
White

(M)  
Mocha

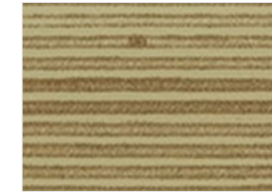


All our MFC is sourced from FSC and PEFC accredited suppliers with the Chain of Custody certification, ensuring that you can be confident you are receiving products manufactured from sustainable sourced materials.

## PLYWOOD EDGING

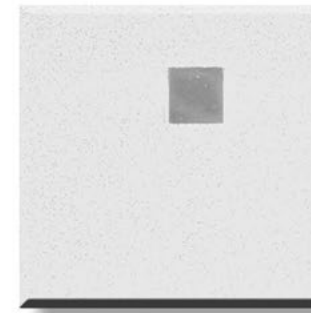


(PLY)  
Plywood Edging Tape



Contact our Specials Department for a quotation

## RECEPTIV FINISHES



(M)  
Mirror



(S)  
Silver



(OR)  
Orange



(GR)  
Green

## TRIM FINISHES



(BL)  
Black RAL 9017



(Qudos Grey)  
Qudos Graphite Grey RAL 7024  
**QUDOS ONLY**



(G)  
Grey RAL 7012



(S)  
Silver RAL 9006



(W)  
White RAL 9016

All metalwork is epoxy powder coated with a choice of up to 5 finishes as standard.

\* Not available as a Receptiv modesty panel finish

# FINISHES INFORMATION

All our products are manufactured using 18 & 25mm thick Melamine Faced Chipboard (MFC) sourced from across the world for optimum quality. An impressive selection of **18** board finishes and **20** Receptiv modesty panel finishes are available.

All desking, storage & pedestal tops are finished with 2mm PVC heavy duty edging tape.

**\*\*\* PLEASE NOTE - Receptiv modesty panels are manufactured from 3mm MDF, please request MDF samples prior to ordering as there may be a slight shade variation between the MFC and the MDF modesty panel.\*\*\***

**\*\*\*Nebraska Oak is not available as a Receptiv modesty panel finish\*\*\***

Colours 'two toned' storage is available with a choice of 18 board finishes for fascias, doors and carcass.

Plywood edging is now available on request for selected products. For more information please contact our Specials Department for a quotation.

# FURNITURE MAINTENANCE

During the development stages of our furniture ranges we have taken great consideration to reducing the maintenance aspect of our products and therefore have only chosen construction methods, materials and finishes to suit your busy office environment. Also to be mentioned is that all our products are covered by our warranty that should give you peace of mind for at least 5 years unless otherwise stated.

However it would be wise to keep an eye on the products on a regular basis to ensure a clean and safe working environment. Therefore we have come up with a recommended procedure to be followed:

The melamine-faced chipboard (MFC) used is the most practical & low maintenance material for an office environment. Its strong points are as follows:

- Scratch resistant
- Resistant to household cleaning products and chemicals
- Resistant to cigarette burns
- Colour-fastness under artificial light
- Resistant to cracking
- Impact resistant
- Abrasion resistant
- Ease of maintenance
- Hygienic surface

So with this in mind, MFC only needs to be dusted down and wiped clean with lukewarm soapy water. No waxing, de-waxing, polishing or any other surface treatment is required.

Our metalwork is powder coated and resistant to minor scratching, chipping, abrasions, cracking, and daily wear and tear and therefore only requires regular dusting and perhaps being washed down with lukewarm soapy water. No strong detergents are required. Other metals used are chrome, zinc and nickel-plated with the same maintenance requirements as the powder-coated metals.

TO SUMMARISE:

## CLEANING

Once weekly dust and wipe down surfaces with just a cloth and warm soapy water.

## STRUCTURAL

Once a month inspect furniture for any loose 'fixings' (screws, nuts, bolts, handles, etc) and tighten if required or report to your superior to be attended to either by the maintenance crew or supplier.

Once a month inspect furniture for any defects, faults in 'moving components' (hinges, runners, castors, locks, tambour doors, etc) and report to your superior to be attended to either by the maintenance crew or supplier.

Should you for any reason require further assistance regarding the maintenance of our products please contact us directly.



British Contract Furniture Association



URS is a member of Registrar of Standards (Holding) Ltd.

## 5 Year Guarantee

Committed to providing exceptional service, manufacturing quality products with a comprehensive 5 year guarantee.